

Intubation Shield assembly and care instructions:

Assembly:

Hold the Intubation Shield with the mouse hole edge down on a firm surface and the sides bending away from you. (Fig. 1) Peel back the blue protective poly mask on the three top bent tabs. Bend the two sides away from you while keeping the center tab on top of the two side tabs. (Fig. 2) Align the three holes together and push the plastic rivet into the hole and depress until it is flush. (Fig. 3 & Fig. 4) Remove the rest of the blue poly mask and your Intubation Shield is ready for use.



Fig. 1



Fig. 2



Fig. 3

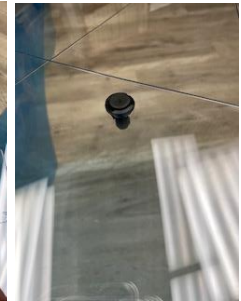


Fig. 4

Care and cleaning:

You may disassemble the shield when not in use or for cleaning by gently lifting the center pin in the plastic rivet up with a small flat head screwdriver. Removing the rivet allows you to unfold the Intubation Shield for thorough cleaning.

Clean the surface using a 100% cotton cloth and soapy water. Rinse with clean water. Alcohol or a mild bleach and water solution can also be used. Do not use Windex or any glass cleaner with petroleum products listed in the ingredients. This may cause the polycarbonate to weaken and crack. You may also use UV light to sterilize the Intubation Shield.

Storage:

You may store the Intubation shield assembled or disassembled depending on your space requirements. In either case, care must be taken to ensure the surface doesn't get scratched. Reuse the blue poly mask on any surface that touches another. If the poly mask is no longer available for use, a plastic bag or tissue paper can be used.

When storing the Intubation Shield in the flat state, do not stack more than 10 without support on the edges.